

Apollo Hybrid INVERTER

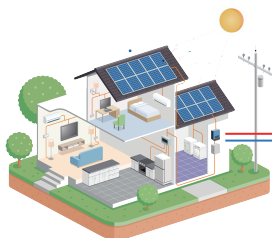
1500W-12V



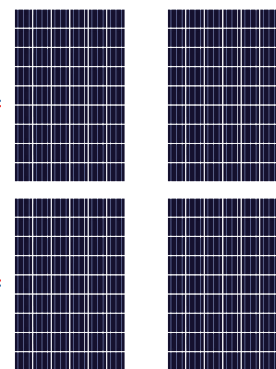
PRODUCT FEATURES

- Pure Sine wave output for better performance.
- Optional Wi-Fi interface with Android & IOS.
- Efficiently Work with or without battery.
- Status indication with RGB lights.
- Over load/Over temperature/short circuit protection.
- Battery Equalization/Compatible with Li-ion, LifePo4 and etc.
- Adaptable to Main Voltage/Generator Power.
- Wide PV input range: 60-500Vdc.
- Programmable multiple operation modes: Grid-tie, off-grid and grid-tie with backup.

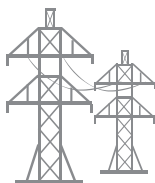
Green Power to Home



Solar Panel



Power grid



Battery bank



DATASHEET		AMK PLUS 1500-12
RATED POWER	1500W	
INPUT		
Voltage	230 VAC	
Frequency Range	170-280 VAC (For Personal Computers) 90-280 VAC (For Home Appliances) 50 Hz/60 Hz (Auto sensing)	
OUTPUT		
AC Voltage Regulation (Batt. Mode)	230VAC ± 5%	
Surge Power	3000VA	
Efficiency (Peak) PV to INV	97%	
Efficiency (Peak) Battery to INV	94%	
Transfer Time	10 ms (For Personal Computers) ; 20 ms (For Home Appliances)	
Waveform	Pure sine wave	
BATTERY & AC CHARGER		
Battery Voltage	12 VDC	
Floating Charge Voltage	13.5 VDC	
Overcharge Protection	16 VDC	
Maximum Charge Current	80 A	
SOLAR CHARGER		
Maximum PV Array Power	2000W	
MPPT Range @ Operating Voltage	60 ~ 430 VDC	
Maximum PV Array Open Circuit Voltage	450 VDC	
Maximum Charging Current	80 A	
Maximum Efficiency	98%	
PHYSICAL		
Dimension, D x W x H (mm)	128*300*363	
Net Weight (kgs)	6.9	
Communication interface	USB/RS232	
OPERATING ENVIRONMENT		
Humidity	5% to 95% Relative Humidity(Non-condensing)	
Operating Temperature	0°C - 55°C	
Storage Temperature	-15°C - 60°C	